



1TB1-2



Actual product appearance may vary.

TB Series Basic Switch, Double Pole Double Throw Double Break Circuitry, 10 A at 250 Vac, Pin Plunger Actuator, Silver Contacts, Solder Termination

Features

- Two- and four-circuit double break
- Power load switching capability to 10 A
- Motor handling capacity of 373 W [1/2 hp] at 125 Vac
- Momentary action
- Choice of actuation and termination

Potential

Applications

- Modern control systems
- Welders
- Industrial equipment

Description

MICRO SWITCH™ TB Series miniature double-break basic switches are basic double-break units that offer a means of controlling isolated circuits. Each circuit may be driven by an independent voltage source.

Product Specifications	
Switch Type	Standard 25,4 mm H x 17,8 mm W x 50,8 mm L [1.0 in H x 0.7 in W x 2.0 in L]
Sealed	No
Ampere Rating	10 A
Circuitry	Two Circuit Double Break (2 CKT DB)
Actuator	Pin Plunger
Termination	Solder
Operating Temperature Range	-55 °C to 125 °C [-67 °F to 257 °F]
Voltage	250 Vac
Approvals	CSA,UL
Contact Type	Silver
Operating Force (O.F.)	1,95 N - 3,61 N [7.0 oz - 13.0 oz]
Release Force (R.F.)	1,11 N [4.0 oz] min.
Pretravel (P.T.)	1,52 mm [0.060 in] max.
Overtravel (O.T.)	0,25 mm [0.010 in] min.
Differential Travel (D.T.)	0,25 mm - 0,64 mm [0.010 in - 0.025 in]

Operating Position (O.P.)	11,7 mm [0.460 in]
Housing Material	General Purpose Phenolic
Agency Approvals and Standards	1054
Maximum Tightening Torque	0,33 N m [3.0 in lb]
Weight	9,07 g [0.02 lb]
Package Height	12,7 mm [0.5 in]
Package Width	12,7 mm [0.5 in]
Package Length	46,4 mm [1.825 in]
Availability	Global
UNSPSC Code	30211905
UNSPSC Commodity	30211905 Snap switches
Series Name	TB

ITBI-2

DRAWING NUMBER

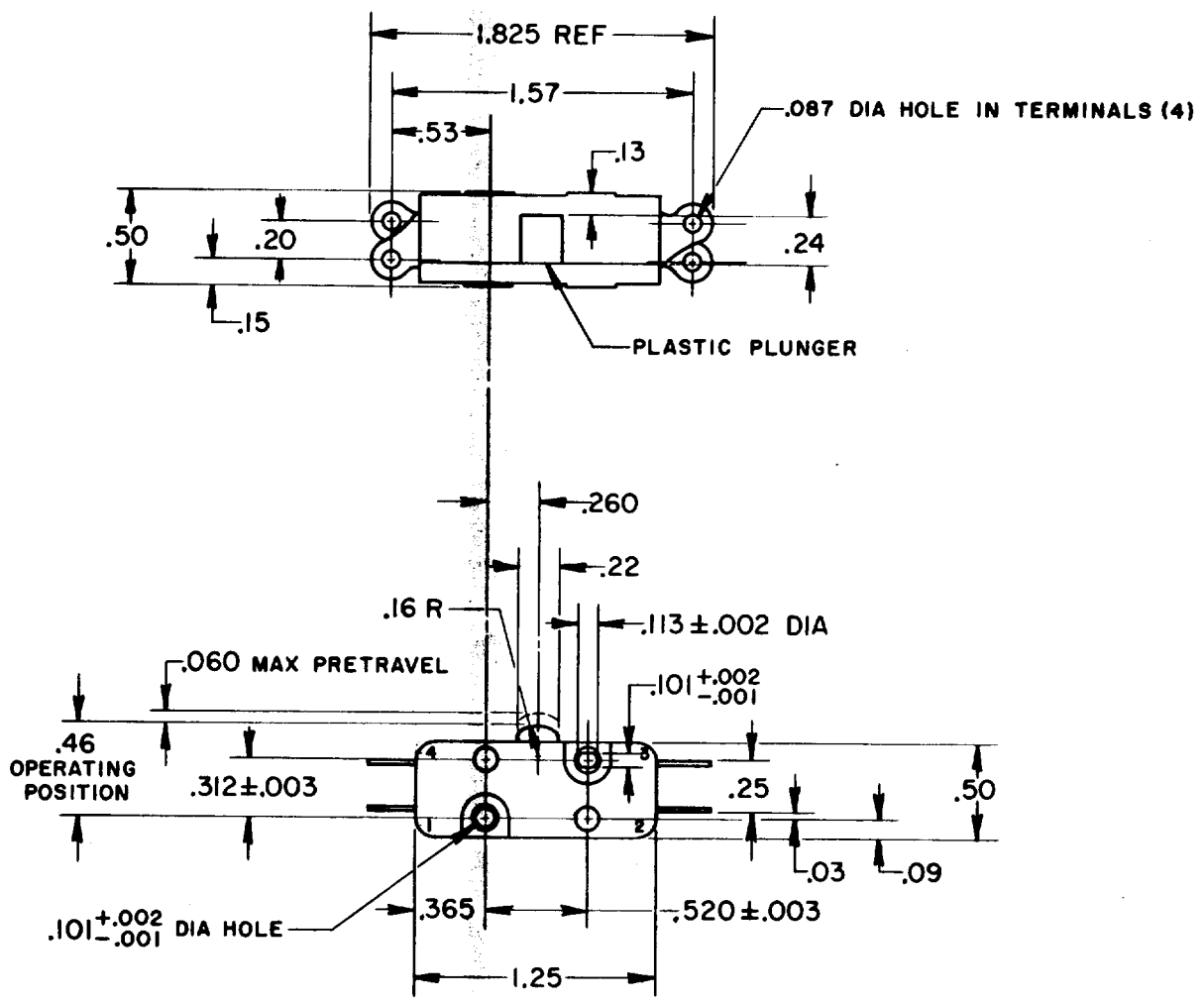
ISSUE

36

REVISIONS

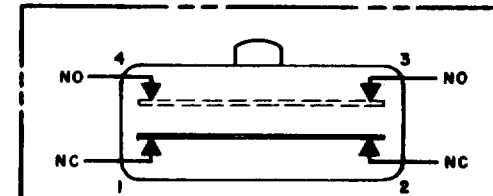
A	C09600	RER	20 FEB 68
B	C033498	DBW	14 MAY 75
C	C036022	RER	29 OCT 75
D	C099824	JAS	18 SEPT 88

REPLACES RELEASE NO. CHECK DRAWING CHECK L2 MAR 68 L2 FEB 68 L2 FEB 68



NOTE -
 1 - TERMINALS 1 & 2 NORMALLY CLOSED CIRCUIT
 2 - TERMINALS 3 & 4 NORMALLY OPEN CIRCUIT
 3 - TERMINALS ARE PLATED FOR SOLDERING

CIRCUIT DIAGRAM



THIS DRAWING COVERS A PROPRIETARY ITEM AND IS THE PROPERTY OF MICRO SWITCH, A DIVISION OF MINNEAPOLIS-HONEYWELL REGULATOR CO. THIS DRAWING IS NOT TO BE COPIED OR USED WITHOUT THE APPROVAL OF MICRO SWITCH.

CHARACTERISTICS	ELECTRICAL DATA	SCALE FULL
OPERATING FORCE - - - - - 7-13 OZ	CONTACT ARRANGEMENT SEE CIRCUIT DIAGRAM	DO NOT SCALE PRINT
RELEASE FORCE - - - - - 4 OZ MIN	L25 10A-125 OR 250 VAC 1/2HP-125 VAC 	UNLESS OTHERWISE NOTED
DIFFERENTIAL TRAVEL - - - - .010-.025		DIMENSIONS ARE IN INCHES
OVERTRAVEL - - - - - .010 MIN		TOLERANCES ARE:
		ONE PLACE (.0) ± .030
		TWO PLACE (.00) ± .015
		THREE PLACE (.000) ± .005
		ANGLES ±
		WEIGHT .02 LB